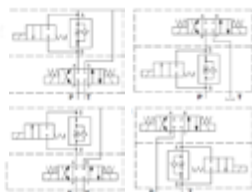


ELECTROVÁLVULAS Y VÁLVULAS CETOP VINCKE / VINCKE CETOP SOLENOIDS AND VALVES /
ÉLECTRO-VALVES ET VALVES CETOP VINCKE

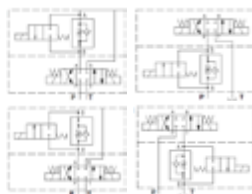
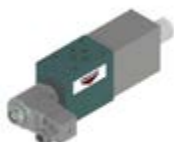
RÁPIDO LENTO CETOP VINCKE
VINCKE FAST-SLOW CETOP
RAPIDE-LENT CETOP VINCKE

RÁPIDO LENTO NORMALMENTE ABIERTO CETOP VINCKE SIN REGULADOR CAUDAL ISO 4401
FAST-SLOW NORMALLY OPEN VINCKE CETOP WITHOUT FLOW REGULATOR ISO 4401
RAPIDE-LENT NORMALEMENT OUVERTS VINCKE CETOP SANS RÉGULATEUR DE DÉBIT ISO 4401



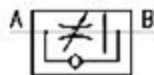
Ref.	Type	Q (l/min.)	Volt.
VNKRL06000	CETOP 3 (NG-6) "P"	40	12 dc
VNKRL06001	CETOP 3 (NG-6) "P"	40	24 dc
VNKRL06002	CETOP 3 (NG-6) "P"	40	220 rac
VNKRL06003	CETOP 3 (NG-6) "A"	40	12 dc
VNKRL06004	CETOP 3 (NG-6) "A"	40	24 dc
VNKRL06005	CETOP 3 (NG-6) "A"	40	220 rac
VNKRL06006	CETOP 3 (NG-6) "B"	40	12 dc
VNKRL06007	CETOP 3 (NG-6) "B"	40	24 dc
VNKRL06008	CETOP 3 (NG-6) "B"	40	220 rac
VNKRL06009	CETOP 3 (NG-6) "T"	40	12 dc
VNKRL06010	CETOP 3 (NG-6) "T"	40	24 dc
VNKRL06011	CETOP 3 (NG-6) "T"	40	220 rac

RÁPIDO LENTO NORMALMENTE CERRADO CETOP VINCKE SIN REGULADOR CAUDAL ISO 4401
FAST-SLOW NORMALLY CLOSE VINCKE CETOP WITHOUT FLOW REGULATOR ISO 4401
RAPIDE-LENT NORMALEMENT FERMES VINCKE CETOP SANS RÉGULATEUR DE DÉBIT ISO 4401



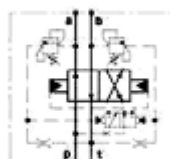
Ref.	Type	Q (l/min.)	Volt.
VNKRL06016	CETOP 3 (NG-6) "P"	40	12 dc
VNKRL06017	CETOP 3 (NG-6) "P"	40	24 dc
VNKRL06018	CETOP 3 (NG-6) "P"	40	220 rac
VNKRL06019	CETOP 3 (NG-6) "A"	40	12 dc
VNKRL06020	CETOP 3 (NG-6) "A"	40	24 dc
VNKRL06021	CETOP 3 (NG-6) "A"	40	220 rac
VNKRL06022	CETOP 3 (NG-6) "B"	40	12 dc
VNKRL06023	CETOP 3 (NG-6) "B"	40	24 dc
VNKRL06024	CETOP 3 (NG-6) "B"	40	220 rac
VNKRL06025	CETOP 3 (NG-6) "T"	40	12 dc
VNKRL06026	CETOP 3 (NG-6) "T"	40	24 dc
VNKRL06027	CETOP 3 (NG-6) "T"	40	220 rac


REGULADOR CAUDAL CETOP VINCKE RÁPIDO LENTO ISO 4401
FLOW REGULATOR VINCKE CETOP FAST-SLOW ISO 4401
RÉGULATEUR DE DÉBIT VINCKE CETOP RAPIDE-LENT ISO 4401



Ref.	Type	Q (l/min.)
VNKRCRL06001	CETOP 3 (NG-6)	2,5
VNKRCRL06002	CETOP 3 (NG-6)	10
VNKRCRL06003	CETOP 3 (NG-6)	16
VNKRCRL06004	CETOP 3 (NG-6)	25

VALVULAS INVERSORAS POR PRESIÓN VINCKE
VINCKE AUTOMATIC DIRECTIONAL VALVE BY PRESSURE
VALVES D'INVERSION PER PRESSION VINCKE



Ref.	Type	Q (l/min.)	Rang.	
HOR560001	VDFC3 (NG-6)	30	40...250	250
HOR560002	VDFC5 (NG-10)	70	40...250	250